

# ÇUKUROVA

BACKHOE LOADERS

**883-885**

Turbocharged Perkins Engine  
Power 100 hp / 74,5 kW  
Operating Weight 8,1 - 8,2 tons  
Bucket Capacity 1,1 m<sup>3</sup>



Embodiment of POWER



## SPECIAL FEATURES



### Improved Performance

The new generation CUKUROVA 883-885 model Backhoe Loaders are the ideal combination of concentrated power, safety and extreme user-friendliness. Cukurova was one of the pioneers in using new generation control system for backhoe loaders. This system (only for 885) of **hydraulic operated joystick controls**, for both backhoe and loader attachments enable operators to spend less effort with much greater precision of movement during working. This system provides better controllability, maintains motion under any flow or load, takes the strain from the operator; increases oil life and reduces oil reservoir temperature.



### Excavator Style Comfort (only for 885)

For backhoe, CUKUROVA 885 offers an extra operating comfort by assembling the hydraulic joysticks on **separately adjustable backhoe joystick columns** placed at the right-left side of the cab. This innovation exceeds the operator demands in so far that they can arrange the columns to their working position by gaining extra space for their free body movement. In this way they feel like they are in an excavator, all the controls are within their easy reach and thus are comfortable while working.

### Powerful Engine

Powering it with **PERKINS 1104C-44T Stage II engine** provides 74,5 kW at 2,200 rpm. It's a turbocharged diesel which offers world-class performance and complies with all relevant environmental regulations. Its low fuel consumption and maintenance costs make the 883-885 even more attractive.



### Roomy ROPS/FOPS Cab

Specially designed **ROPS/FOPS cab** provides perfect operating comfort, excellent visibility with tinted safety glass. Front and side control panels are all equipped with the latest technology and guides the operator to failures with the audible and visual warnings on main functions.

### Cushioned swing and boom

Cushioned Swing and Boom provides maximum operator comfort for fast and smooth trenching.

### Swing structure

Durable steel structure for pivot and side shift provides low operating cost and long life.

**Maximum comfort, Ease of operation, Low operating cost**

The new generation Cukurova 883-885 model Backhoe Loader is designed to provide maximum comfort, ease of operation, low operating cost for the most demanding needs of operators. The affect of these three combinations can be seen in every detail of the machine, to exceed the customer expectations.

**Automatic return to dig system (only for 885)**

The 885 provides you with automatic return to dig system as standard to get max efficiency with reduced cycle times by leveling the loader bucket back to dig position with a pull of loader joystick.

**Electro Hydraulic Suspension System (EHSS) - optional**

Optional EHSS (electro hydraulic suspension system) switch within the cab absorbs the vibrations on rough terrain and gives automotive-comfort and high travel speeds.



**Low Operating Cost**

For maintenance and repair Cukurova 883-885 model Backhoe Loaders supply a lot of noteworthy benefits for the operator. **Bolt type cylinder head** assembly for cylinders provides quick replacement of cylinder seal kit during the overhaul of the machine keeping the spare parts cost at minimum. Sealed pins and bushings extend the life time of the linkages of the attachments by preventing the entry of dust or blockages and increases the time between service periods. **Tilt-able hydraulic and transmission cooler (only for 885)** make it convenient to wash and clean the engine cooler without removing any hose connections. Also the **tilt-able engine hood (only for 885)** enables operator to access all the necessary maintenance points easily and quickly thus spending less time and effort.

## OPERATORS ENVIRONMENT



**Excellent visibility with more tinted safety glass and increased cab room**

### **Cab**

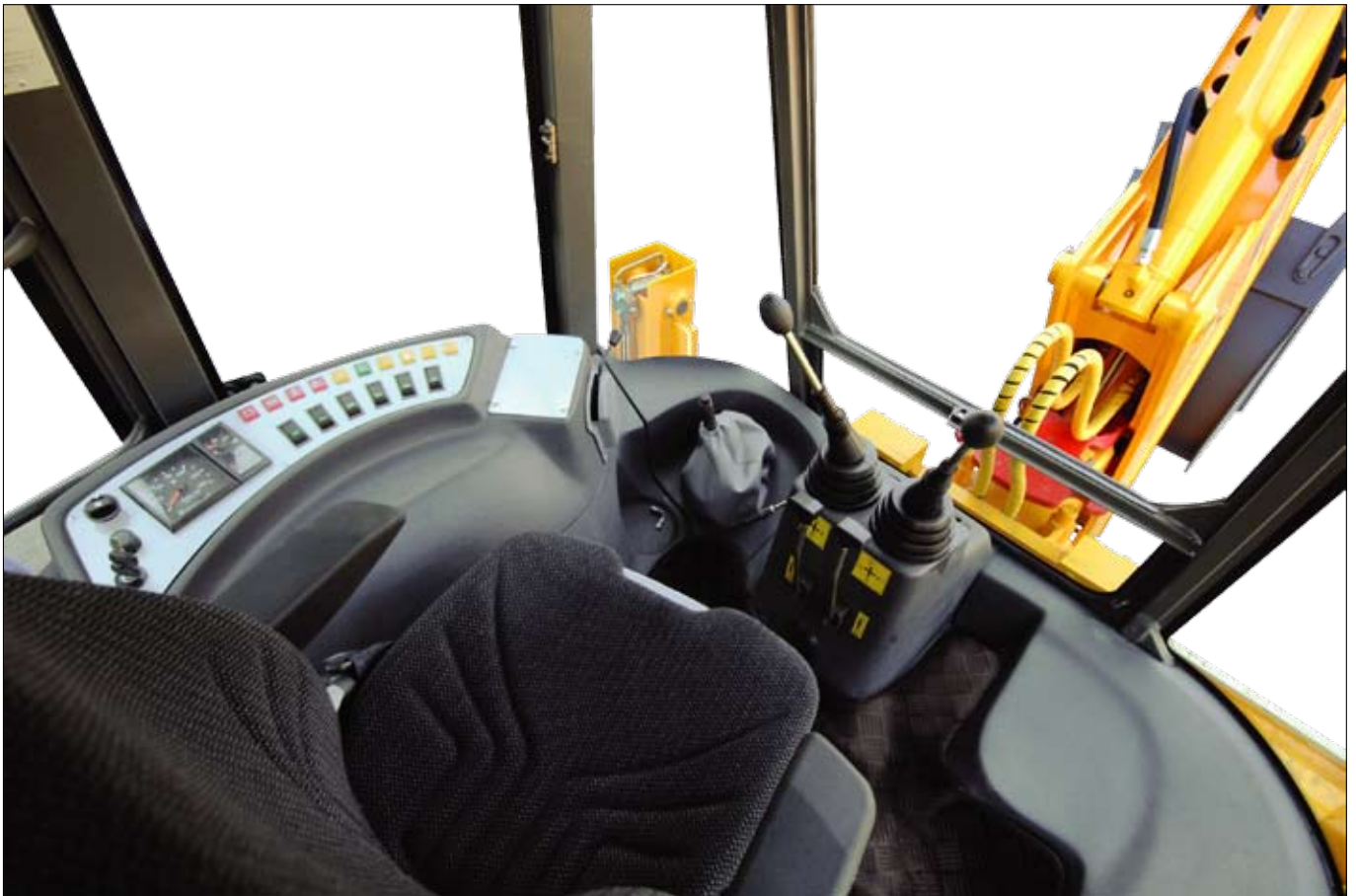
- Specially designed ROPS/FOPS cab provides perfect operating comfort, excellent visibility, and reliability.
- Front and side control panels are fully equipped with the latest technology, the arrangement of controls are within easy reach, the audible and visual warning on main function guide operator for failure and adjustable steering column as standard gives extra driving comfort to the operator.
- Full-opening of rear side windows, partial and full-opening of the doors provide superior fresh air circulation in the cab, tinted safety glass improves visibility and sun visor protects operator against strong sunlight and ensures clear vision.

### **Seat**

Adjustable operator's seat with safety belt can be adjusted to different body weights and heights to obtain comfortable ride and work.

### **Heating and ventilation**

Fresh air heater/blower unit, full heating control system, defroster control with only one switch are also existing as standard.

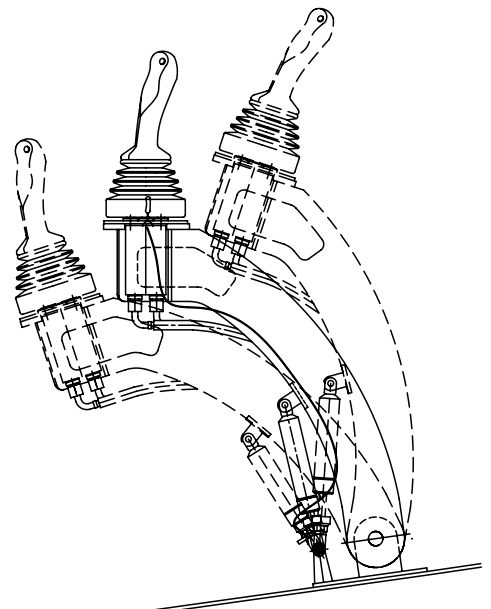


#### **Mechanical Operated Control Levers (only for 883)**

- Ergonomically located, mechanical operated control levers are within easy reach of the operator, provides operating comfort and increase productivity.

#### **Hydraulic Operated Joystick Controls (only for 885)**

- As standard, patent-protected backhoe joystick columns can be adjusted separately in all positions for front and rear movement of the columns. This new improvement meets high utilization requirements of the operator and increases productivity with low effort.
- The placement of the columns provides large working area for the operator.
- Hydraulic operated joystick controls for both front loader and backhoe attachments enable the operator to have smooth control and get precise movement.



# TECHNICAL SPECIFICATIONS

## Engine

- Heavy duty design, high torque capability, powerful PERKINS engine.
- Impressive low speed torque of with 412 Nm to deliver improved machine response.
- ECC filtration system provides high quality construction with a re-usable canister, a disposable inner element and a simpler service process.
- Low fuel consumption and low maintenance cost.
- Environmental, Stage II
- Dry type air cleaner with primary and safety elements.

Make	Perkins
Model	1104C - 44T
Type	4 stroke diesel, turbo charged
Rated power	100 (74,5) hp / kW
Rated speed	2200 rpm
Displacement	4,4 L.
Bore and Stroke	105 x 127 mm
No of cylinders	4
Max. Torque	412 Nm
Cooling	Water cooled and engine oil cooler

### Electrical system

Battery	12 / 120 V/Ah
Starter	3 kW

## Hydraulic System

- Open Center System.
- Tandem gear pump.
- Electro-hydraulic unloader switch on loader joystick; efficiency due to unloader function (only for 885).
- Power modulation.
- Hydraulic speed control system.
- Hydraulic operated backhoe and loader control valves enable operators to have smooth control and get precise movement (only for 885).
- Bolt type cylinder design with all sealed pins and bushings for easy maintenance and long life.
- Cushioned Swing and Boom provides maximum operator comfort for fast and smooth trenching.

System type	Unload / o-center
Hydraulic pump	Tandem gear
Max. Flow	90 + 64 l/min
Max. Press.	220 bar
Hydraulic oil filter	Full flow filter in return line with integrated fine filter area
Hydraulic oil cooler	Hydraulic and transmission oil cooler

### Hydraulic Controls 883

Backhoe controls	Mechanical control levers
Loader control	Mechanical control lever

### Hydraulic Controls 885

Backhoe controls	Hydraulic joystick controls
Loader control	Hydraulic joystick control

## Drive Train

### Transmission:

- ZF powershift transmission.
- Transmission neutralizer switch on loader joystick (only for 885).
- Low noise and low internal speeds.
- High gear contact ratio.
- All helical gear design.
- Integrated clutch and lube oil supply.
- Vertical mount spin-on pressure filter.

Make	ZF
Type	Powershift
Transmission disconnect (883)	with brake system
Transmission disconnect (885)	with push button and brake system

### Travel Speeds

1st (forward/reverse)	6,5 / 7,0 km/h
2nd (forward/reverse)	11,0 / 12,0 km/h
3rd (forward/reverse)	26,0 / 30,0 km/h
4th (forward/-)	40,0 km/h

### Axles:

#### ZF Front Axle

- Ease of operation with hydrostatic steering system even under high load conditions.
- Limited slip differential.
- 20° total oscillation on front axle.
- 52 degrees steering angle for perfect maneuverability.

#### ZF Rear Axle

- High input torque with planetary design.
- Electro-hydraulic operated differential %100 locking acts an rear axle.
- Self adjusting high torque internal wet multi disc service brake.

# TECHNICAL SPECIFICATIONS

## Brakes

- Internal wet multi disc brakes.
- Hydraulically foot operated service brake two pedals acted on four wheels.

2 wheel / 4 wheel	2 wheel
Service type	Hydraulic wet multi-disc
Parking type	Mechanical control on rear axle

## Steering

- Hydrostatic power and emergency steering.
- Load sensing system.

Steering Type	2 Wheel
Power Steering	Hydrostatic

Turning Circle (without brakes)

Out.Front Tire Clearance	8400 mm
Out.Loader Bucket Clearance	11100 mm

## Loader Attachment

Shovel Capacity	1,1 m <sup>3</sup>
Breakout Force Lift	51,58 kN
Breakout Force Shovel Max.	77,2 kN
Shovel Width	2280 mm
Lift to full height	3273 kg

## Backhoe Attachment

Max. Bucket Tearout Retract	59,4 kN
Dipper Tearout	
Retracted	30,8 kN
Extended	21,7 kN

## Tires

883

Front 4WD	12,5 / 80-18
Rear 4WD	16,9 – 28

885

Front 4WD	12,5 / 80-18
Rear 4WD	16,9 – 28
Front 4WD	16 / 70-20
Rear 4WD	16,9 – 28

## Cab

- ROPS (ISO 3741) - FOPS (ISO 3449) tinted safety glass giving total visibility full opening rear-side windows, front and rear windscreen wipers.
- Seat; adjustable to operator's weight.
- Heating and ventilation; fresh air heater/blower unit, full heating control system, defroster control with only one switch.

## Weights

Operating Weight (883)	8100 kg
Operating Weight (885)	8200 kg

## Capacities

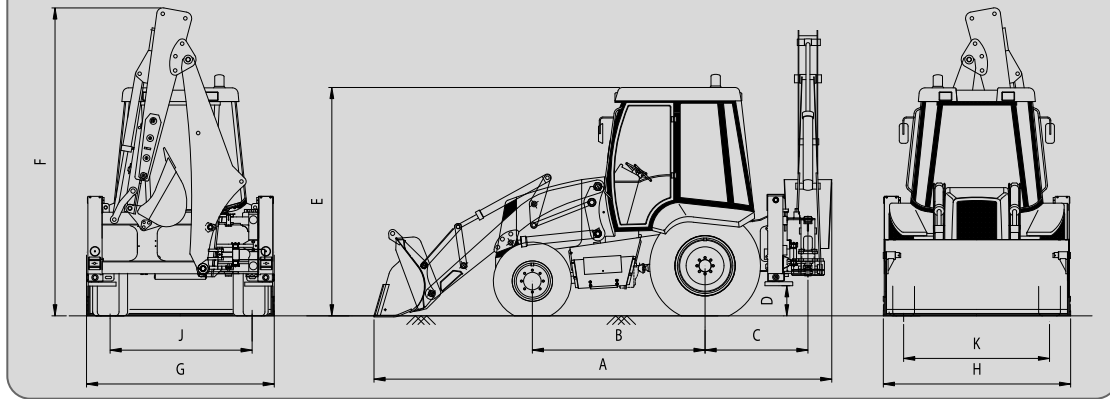
	Liters
Engine Oil	8,4
Cooling System	25,0
Fuel Tank	100,0
Hydraulic Tank	100,0
Hydraulic System	140,0
Front Axle	7,8
Rear Axle	16,0
Brake Oil	0,4





# DIMENSIONS

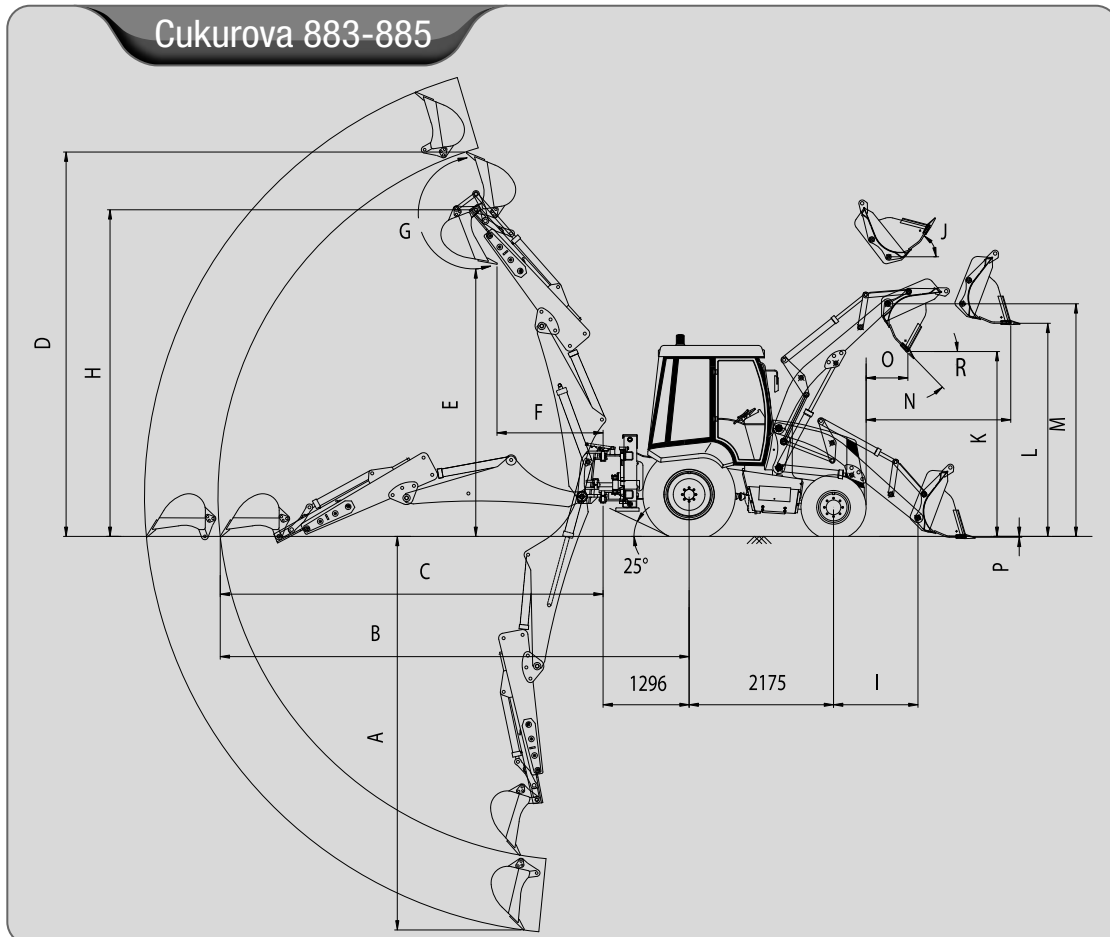
## Cukurova 883-885



A - Overall Machine Length	5775 mm.
B - Wheelbase	2175 mm.
C - Backhoe Swing Centre Distance	1296 mm.
D - Minimum Machine Height	400 mm.
E - Cab Height	2860 mm.

F - Machine Maximum Height	3832 mm.
G - Machine Maximum Width	2280 mm.
H - Overall Width - with Bucket	2280 mm.
J - Rear Wheel Track	1770 mm.
K - Front Wheel Track	1892 mm.

## Cukurova 883-885



### Backhoe Dimensions

	Retracted	Extended
A - Max. Digging Depth	4600 mm.	5800 mm.
B - Max. Reach From Rear Axle Center	7000 mm.	8100 mm.
C - Max. Reach From Swing Center	5700 mm.	6800 mm.
D - Max. Digging Height	5600 mm.	6450 mm.
E - Max. Dumping Height	3850 mm.	4700 mm.
F - Loading Reach	1800 mm.	2650 mm.
G - Bucket Rotation Angle	200,4°	200,4°
H - Max. Bucket Hinge Pin Height	4750 mm.	5550 mm.

### Loader Dimensions

I - Distance Between Hinge Pin and Front Axle Center	1200 mm.
J - Max. Rollback angle, fully raised	59,2°
K - Dump Height	2740 mm.
L - Loadover Height	3200 mm.
M - Height to Hinge Pin	3500 mm.
N - Max. Reach at Full Height	1070 mm.
O - Dumping Reach	630 mm.
P - Digging Depth	113 mm.
R - Dump Angle	45°

## SERVICEABILITY



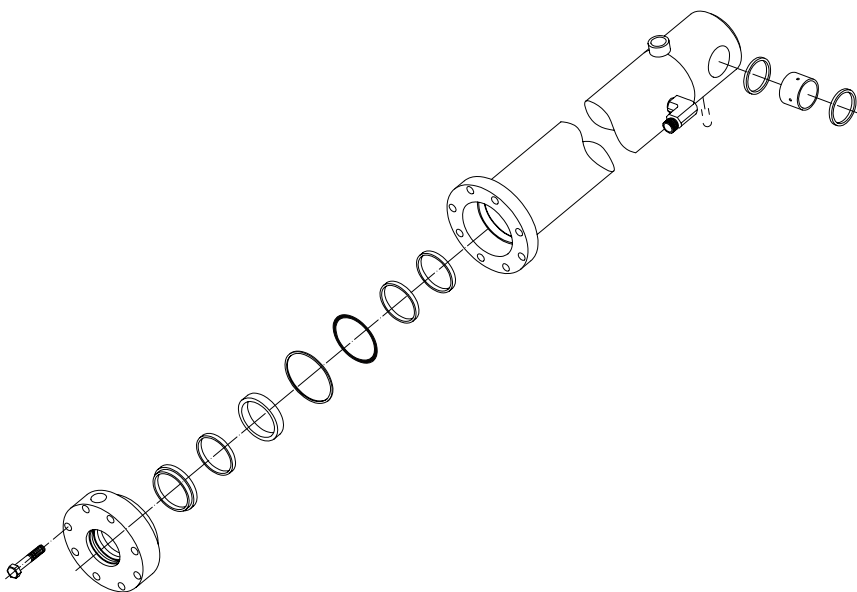
**Ease of maintenance, easy and quick access, low operating cost**

### **Tilt-able engine hood (only for 885)**

- Tilt-able and pop-up hood enables operator to access all the necessary maintenance points easily and quickly by spending less time and effort.
- Tilt-able hydraulic and transmission cooler make it convenient to wash and clean the engine cooler without removing any hose connections.

### **Bolt type cylinder head**

- Bolt type cylinder head assembly for cylinders provides quick replacement of cylinder seal kit during the overhaul of the machine keeping the spare parts cost to a minimum.
- All sealed pins and bushings extend the life time of the linkages of the attachments by preventing the entry of dust or blockages and increases the time between service periods.



# EQUIPMENT

## Standard Equipment

---

### Attachments, Front Loader

- General purpose bucket
- Loader arm safety strut
- Hydraulic operated joystick control (885)
- Automatic return to dig (885)

### Attachments, Backhoe

- Hydraulic operated joystick controls (885)
- Swing and Boom transport lock with hydraulic control from the cab (885)
- Swing and Boom transport lock with mechanical control from the cab (883)
- Electro-hydraulic side shifting lock
- ISO pattern controls
- Standard-duty bucket (600 mm)
- Stabilizer safety check valves
- Adjustable backhoe joystick columns (885)

### Drive Train

- Electro-hydraulic differential lock
- Front axle, 4WD pendulum mount
- Front axle, limited slip differential
- 40 kph gearbox (full powershift)
- Transmission neutralizer switch (885)

### Electrical System

- Alarm, backup
- Battery, 12 V, 120 Ah
- Front headlights
- Master switch
- Visual and audible warning systems on main functions
- Warning horn

### Engine System

- Air cleaner, dry type and radial seal
- Alternator 75 amp.
- Starting system thermal aid
- Turbocharged
- Air filter condition indicator lamp

### ROPS/FOPS Cab

- Cab recirculating fan
- Defroster
- Front windshield washer and wiper
- Fully equipped instrument panel
- Heater
- Left-right side doors with locks
- Mirrors, exterior (2), interior (1)
- Adjustable seat with seat belt and armrest
- Tinted glass
- Rear windshield wipers
- Rotating beacon (detachable)
- Steering wheel spinner knob
- Working lights, 2 rear and 4 front
- Tool box, external
- Cigarette lighter
- Coat hook
- Sunvisor
- Ventilation openers
- Adjustable steering column
- Storage compartment (885)

## Optional Equipment \*

---

### Attachments, Front Loader

- Multipurpose bucket
- Fork attachment
- Safety check valves
- Bolton segment
- (EHSS) Electro Hydraulic Suspension System

### Attachments, Backhoe

- Additional backhoe buckets
- Telescopic boom
- Safety check valves
- 4WD shaft guard
- Hydraulic hammer piping
- Hydraulic hammer

### Others

- Air pre-cleaner
- Front mudguards
- Battery 150 Ah
- Air condition
- Radio / Casette Player

(\*) Please contact with your CUKUROVA dealer for other optional equipment.

CE marked - All safety measurements are taken through the Machinery Directives 98/37/EC

-Illustrations and data may differ from standard equipment.  
-Specifications are subject to change without notice.  
-See your ÇUKUROVA dealer for available options.



**cumitas**

**ÇUKUROVA MAKİNA İMALAT ve TİCARET A.Ş.**

Adana Yolu PK.61 33470 Tarsus - Mersin / TÜRKİYE

Phone: +90 324 616 26 78 • Fax: +90 324 616 32 20

[www.cumitas.com](http://www.cumitas.com)

[info@cumitas.com](mailto:info@cumitas.com)

DEALER STAMP